

10th Annual Review of Clinical Neurology

A Virtual Course

Alon Y. Avidan, MD, MPH, Course Director

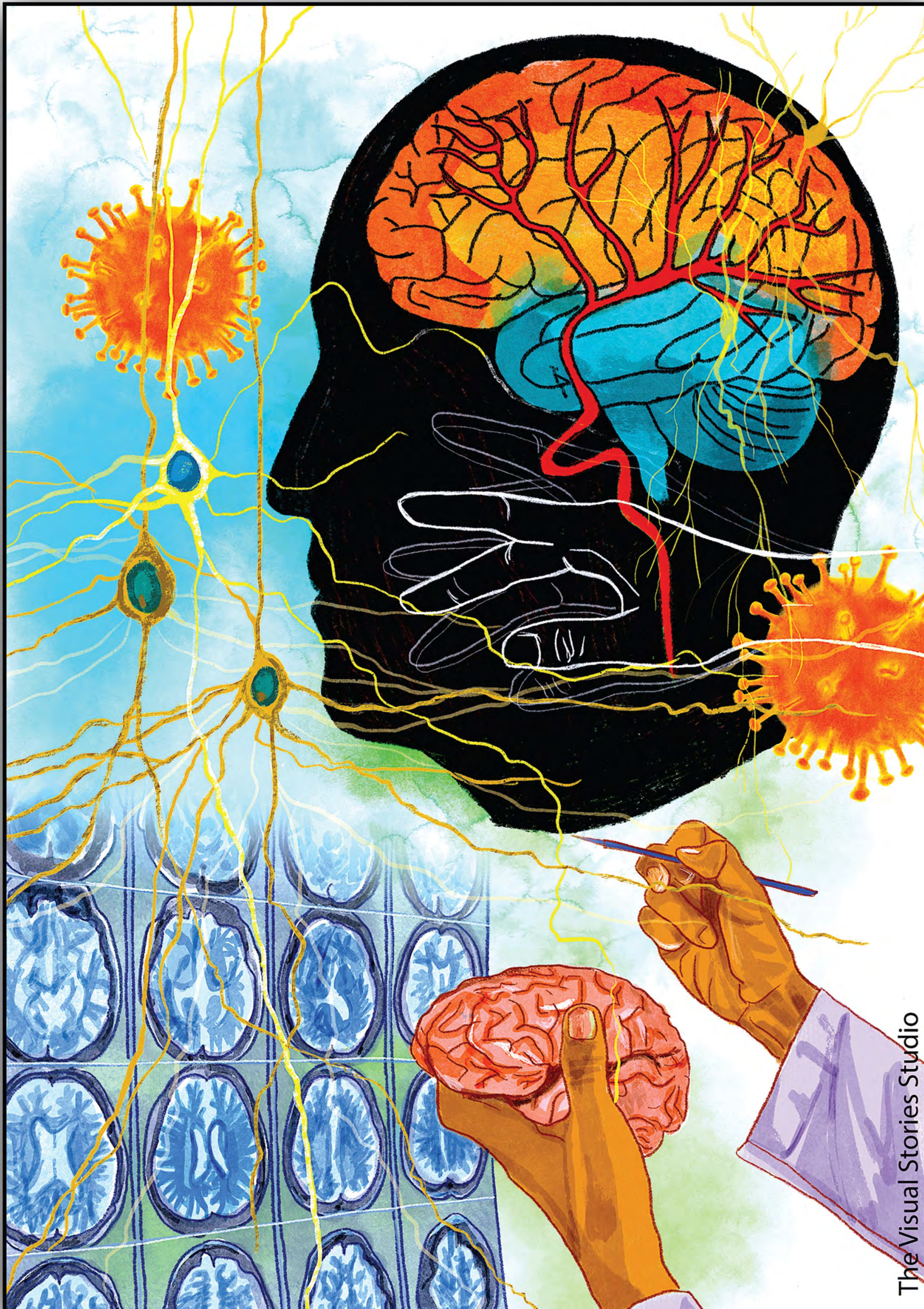
Kevin Patel, MD, Associate Director

David Geffen School of Medicine at UCLA

[Register Now](#)

[Discover More](#)





The Visual Stories Studio

Introduction:

The Review of Clinical Neurology Virtual CME Course is designed to provide a comprehensive and practical review of core neurological disorders. It is intended for neurologists who wish to strengthen their competency and proficiency in evaluating, diagnosing, and managing a broad range of neurological disorders.

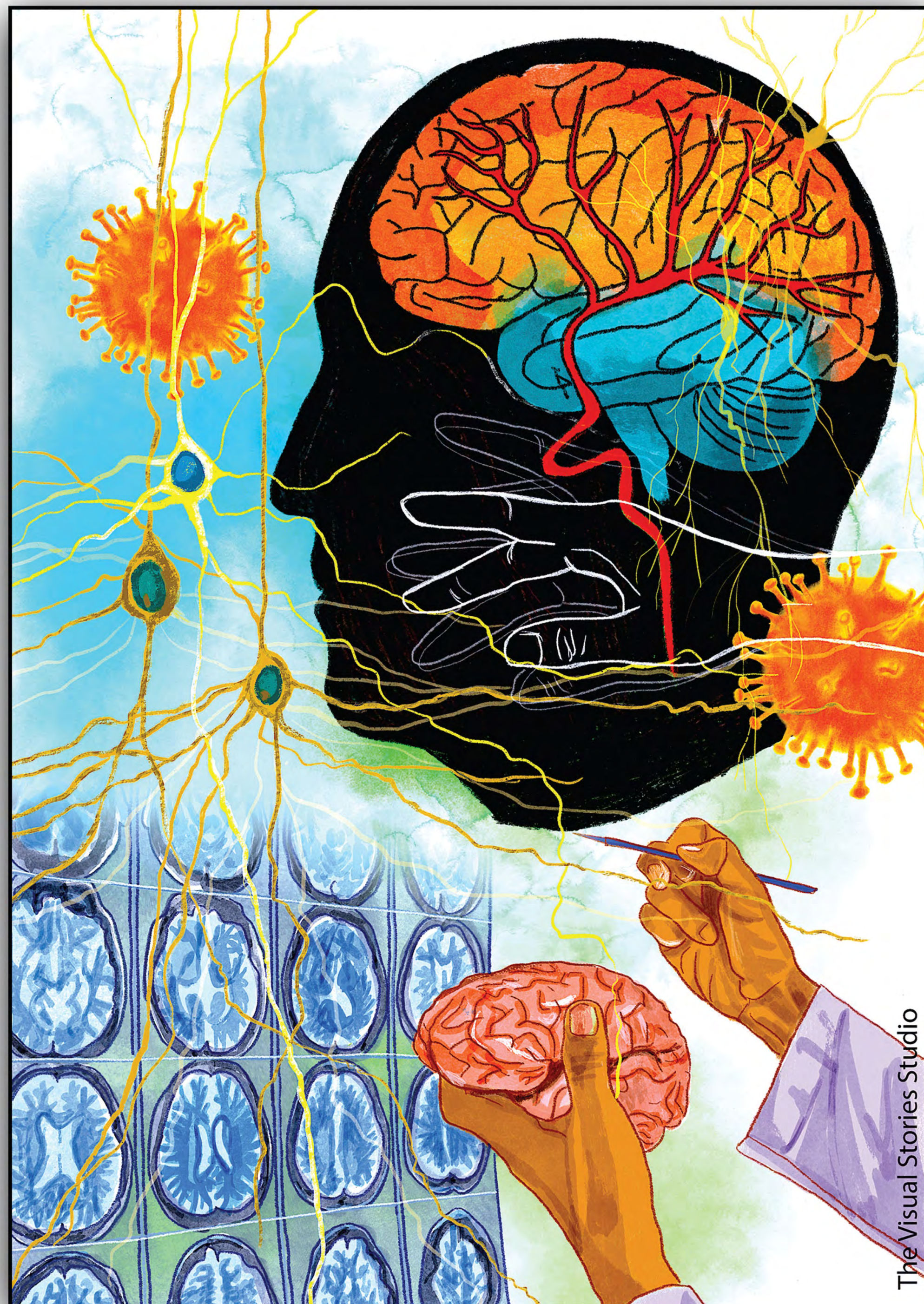
The course is organized to provide attendees with a review of clinical neurology based on major disease topics. Each neurological core topic will be organized to summarize the clinical spectrum of the disorders, pathophysiology, etiology, diagnostic techniques, and management options.

Course Highlights:

Upon completion of this activity, participants will be able to effectively use this educational symposium to enhance their clinical knowledge of key neurologic disorders, expand their horizons on recent discoveries about disease pathology, appreciate new diagnostic tools and think critically about management options.

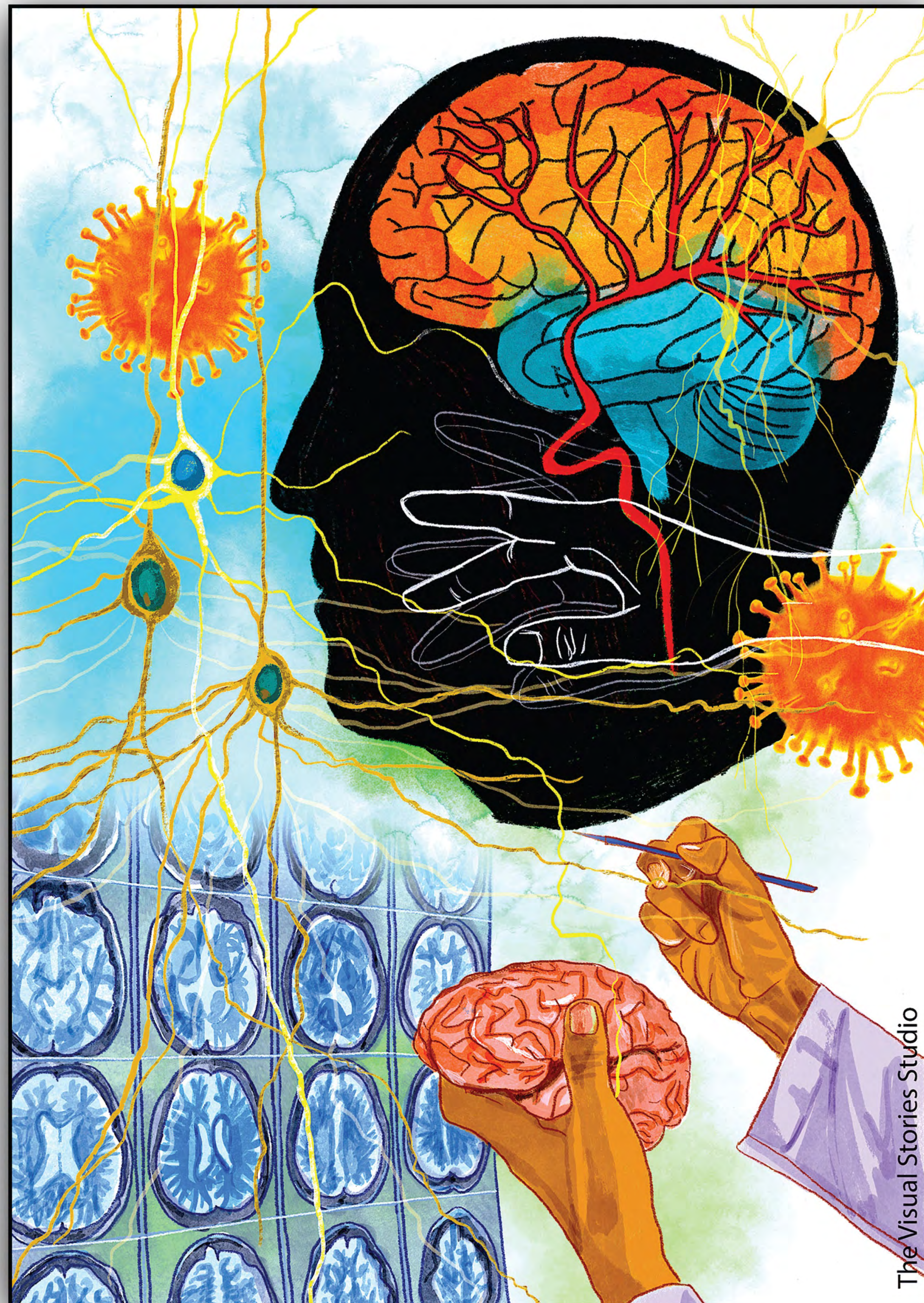
Target Audience:

This course is designed for neurologists in private, health groups, or academic practice, as well as neurology, psychiatry, and neurosurgery trainees (residents, fellows). The course will be particularly helpful for allied healthcare providers in neuroscience specialties (psychologists, physician assistants, nurses, and nurse practitioners, speech pathologists, and physical and occupational therapists).



Course Highlights

- ❑ Comprehensive, evidence-based review of common neurologic disorders.
- ❑ Presentation of common and important neurologic conditions, emphasizing practical aspects of clinical care and highlighting recent discoveries in disease mechanisms, pathophysiology, diagnostic tools, and recently approved treatment options.
- ❑ Presentation of three new things, focusing on recent advances in the clinical domain.
- ❑ Effective, evidence-based treatment options based on recent publications of the American Academy of Neurology Clinical Practice Guidelines.
- ❑ Video demonstration of unique clinical manifestations, epilepsy mimics and sleep phenomenon.
- ❑ Discussion of “hot topics” such as neurologic aspects of long-COVID, disclosure of Neurogenetic test results, and key innovations in representative disease states.



Course Learning Objectives

At the conclusion of this course, participants should be able to:

- Utilize most current evidenced-based practices to improve confidence in diagnosing and managing major disease states in neurology, including multiple sclerosis, headaches, epilepsy, central nervous system infections including COVID-19 infection, movement disorders, neurodegenerative disorders, sleep disorders, neuromuscular diseases, neuro-otology, stroke management, neuro-ophthalmology, ethical principles of disclosure of neurodegenerative conditions in neurology.
- Discuss neurologic disease utilizing a case-based approach across the age groups from pediatrics to older age.
- Explore the utility of neurologic testing, including cerebrospinal fluid analysis, neuropsychiatric testing, neuroimaging, and neurophysiological assessments, including polysomnography, electroencephalography, electromyography, and nerve conduction velocity testing.
- Discuss the underlying neuropathology of key neurological conditions and appraise the utility of disease-modifying treatments in representative conditions, including Alzheimer's disease and multiple sclerosis.
- Identify appropriate the most current appropriate and innovative therapeutic strategies for common neurologic disorders and complaints.
- Apply the principles of ethics to the disclosure of conditions and testing that might predict the risk of future development of neurodegenerative conditions.

10th Annual Review of Clinical Neurology

CME Course Schedule Overview

| DAY 1 (FRIDAY 9/13/2024) | | | |
|----------------------------|--|--|---|
| REGISTRATION | | TOPIC | FACULTY |
| 7:45-8:00 | | Introduction and welcome Address | Alon Y. Avidan, MD, MPH, Course Director Kevin Patel, MD, Course Co-Director |
| 8:00-9:00 | | Review of Pediatric Neurology | Meeryo Choe, MD |
| 9:00-9:45 | | Practical Neurogenetic Cases | Brent Fogel, MD, PhD |
| 9:45-10:30 | | Innovation in Neurogenetic Therapies | Susan Perlman, MD |
| 10:30-11:15 | | The Approach to Patients with New Onset Seizures | John Stern, MD |
| 11:15-12:00 | | Workup and Management of Strokes | Jeffrey Saver, MD |
| INTERMISSION | | | |
| 1:00-2:00 | | Syndromic Approach to Neuroinfectious Diseases | Tracey Cho, MD |
| 2:00-3:00 | | Neuroimaging Cases | Noriko Salamon, MD, PhD |
| 3:00-4:00 | | Viral Infections and Autoimmune Encephalitis. | Michael Wilson, MD |
| 4:00-4:45 | | Neurosurgical Interventions in Neurologic Disease | Langston Holly, MD |
| 4:45-5:30 | | Neuro palliative Care | Cara Siegel, MD |
| DAY 2 (SATURDAY 9/14/2024) | | | |
| 8:00-9:00 | | “What Neurologists Need to Know About Sleep” | Alon Avidan, MD, MPH |
| 9:00-10:00 | | Spells, fits and non epileptic events; Video Demonstration and Innovations | Wellesley Kerr, MD |
| 10:00-11:00 | | “Practical Approaches to the Dizzy Patient” | Kevin Kerber, MD |
| 11:00-12:00 | | Movement Disorders: Review and Practical Approaches | Adrienne Keener, MD |
| INTERMISSION | | | |
| 1:00-1:45 | | Neuromuscular Disease Cases | Perry Shieh, M.D, Ph.D |
| 1:45-2:30 | | Myopathies: From Diagnosis to Innovation | Payam Soltanzadeh, MD |
| 2:30-3:15 | | Dementia Cases | Bruce Miller, MD |
| 3:15-4:00 | | Diagnostic and Prognostic Value of Neuroimaging | Dan Silverman, MD, PhD |
| 4:00-4:45 | | Innovations in the Treatments for Alzheimer's Disease | Fanny M. Elahi, MD, PhD |
| 4:45-5:30 | | Communicating Risk of Dementia: when, how, why, what | Neil Wegner, MD |
| DAY 3 (SUNDAY 9/15/2024) | | | |
| 8:00-9:00 | | Neurologic Critical Care: Five Cases and Lessons | Navaz Karanjia, MD |
| 9:00-10:00 | | Vasculitis of the Central Nervous System | Tanaz A. Kermani, MD |
| 10:00-11:00 | | Review of Neuroophthalmology | Wayne Conrblth MD |
| 11:00-12:00 | | Management of Headache Disorders | Joshua Kamins, MD |
| INTERMISSION | | | |
| 1:00-1:45 | | Evaluation of the Patients who present with a Brain Mass | Robert Chong, MD |
| 1:45-2:30 | | Neurosurgical Approached in Neurooncology: What Neurologists Need to Know | Kunal Patel, MD |
| 2:30-3:30 | | Autonomic Disorders | Paola Sandroni MD, PhD |
| 3:30-4:30 | | 2024: A new chapter in MS Diagnosis and Treatment | Kevin Patel, MD |
| 4:30-5:15 | | Promoting Brain Health in People with MS | Barbara Giesser, MD |
| 5:15-5:30 | | Conclusion and Adjournment | Alon Y. Avidan, MD, MPH, Course Director Kevin Patel, MD, Course Co-Director |



Course Director

Alon Y. Avidan MD, MPH

Professor, UCLA Department of Neurology, UCLA Sleep Medicine Program, David Geffen School of Medicine at UCLA, University of California, Los Angeles



Associate Director

Kevin Patel, MD

Assistant Professor
Multiple Sclerosis Division,
UCLA Department of Neurology
David Geffen School of Medicine at UCLA
University of California, Los Angeles
Los Angeles, CA

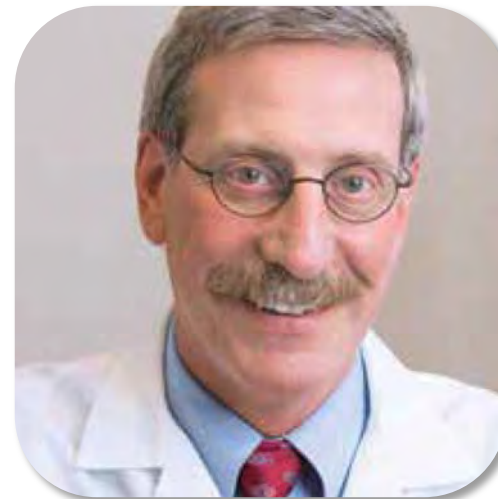
10th Annual Review of Clinical Neurology

CME Course Faculty



Syndromic Approach to Neuroinfectious Diseases

Tracey A. Cho, M.D.
Professor & Director | Neuroimmunology
Division Vice Chair for Education |
Clerkship Director Department of
Neurology University of Iowa Healthcare
Iowa City, IA



Review of Neuroophthalmology

Wayne T. Cornblath, MD
Professor, Departments of Ophthalmology &
Visual Sciences And Neurology
WK Kellogg Eye Center
University of Michigan
Ann Arbor, MI 48105



Promoting Brain Health in People with MS

Barbara Giesser, MD
Professor Emeritus of Clinical Neurology
Staff Physician,
Pacific Neuroscience Institute
Santa Monica, CA



Review of Pediatric Neurology

Meeryo Choe, MD
Associate Professor
Residency Program Director
UCLA Division of Pediatric Neurology
David Geffen School of Medicine at UCLA
University of California Los Angeles,
Los Angeles, CA



Innovations in the Treatments for Alzheimer's Disease

Fanny M. Elahi, MD, PhD
Associate Professor Departments of Neurology
Co-Director of Genomics Core, Alzheimer's
Disease Research Center
Friedman Brain Institute
Icahn School of Medicine at Mount Sinai
New York, NY



Neurosurgical Interventions in Neurologic Disease

Langston Holly, MD
Professor of Neurosurgery and Orthopedics
Vice Chair of Clinical Affairs and Executive Vice Chair
Ulrich Batzdorf Endowed Chair in Spinal Neurosurgery
Department of Neurosurgery
David Geffen School of Medicine at UCLA
University of California Los Angeles, Los Angeles, CA



Evaluation of the Patients who present with a Brain Mass

Robert Chong, MD
Associate Professor
Department of Neurology, Neurooncology
Division
David Geffen School of Medicine at UCLA
University of California Los Angeles
Los Angeles, CA



Practical Neurogenetic Cases

Brent Fogel, MD, PhD
Professor of Neurology and Human Genetics
Director, Neurogenetics Clinic & Clinical
Neurogenomics Research Center
Department of Neurology
David Geffen School of Medicine at UCLA
University of California Los Angeles
Los Angeles, CA



Management of Headache Disorders

Joshua Kamins, MD
Associate Professor
Goldberg Migraine Program
Associate Director Steve Tisch BrainSPORT Program
Department of Neurology
David Geffen School of Medicine at UCLA
University of California Los Angeles, Los Angeles, CA

10th Annual Review of Clinical Neurology

CME Course Faculty



Neurologic Critical Care: Five Cases and Lessons

Navaz Karanjia, MD
Director, UCSD Neurocritical Care Program
Professor of Neurosciences, Anesthesiology and Neurosurgery
University of California-San Diego Health
San Diego, CA



Vasculitis of the Central Nervous System

Tanaz Kermani, M.D., M.S.
Associate Professor
Director, UCLA Vasculitis Program,
Division of Rheumatology
David Geffen School of Medicine at UCLA
University of California Los Angeles,
Los Angeles, CA



Neurosurgical Approached in Neurooncology: What Neurologists Need to Know

Kunal Patel, MD
Assistant Professor of Neurosurgery
Department of Neurosurgery
University of California Los Angeles,
Los Angeles, CA



Movement Disorders: Review and Practical Approaches

Adrienne Keener, MD
Professor, Movement Disorders Program
Neurology Residency Director
Department of Neurology
David Geffen School of Medicine at UCLA
University of California Los Angeles,
Los Angeles, CA



Spells, fits & nonepileptic events; Video Demonstration

Wesley T. Kerr, MD, PhD
Assistant Professor
Departments of Neurology Division of Epilepsy
Clinic Lead Epileptologist
University of Pittsburgh/UPMC
Pittsburgh, PA



Innovation in Neurogenetic Therapies

Susan Perlman, MD
Professor & Director, Ataxia Center and HD
Center of Excellence
Department of Neurology
David Geffen School of Medicine at UCLA
University of California Los Angeles,
Los Angeles, CA



Practical Approaches to the Dizzy Patient

Kevin Kerber, MD
Professor & Co-Director, Health Services
Research. Neuro Otology Program
The Ohio State Neurological Institute
Department of Neurology
Columbus, OH 43210



Dementia Cases

Bruce Miller, MD
A.W. and Mary Margaret Clausen Distinguished
Professor in Neurology
Director, Memory and Aging Center
Founding Director, Global Brain Health Institute,
University of California, San Francisco
Weill Institute for Neurosciences
San Francisco, CA



Neuroimaging Cases

Noriko Salamon, MD, PhD
Professor of Radiology
Chief of Neuroradiology
Department of Radiology
David Geffen School of Medicine at UCLA
University of California Los Angeles,
Los Angeles, CA

10th Annual Review of Clinical Neurology

CME Course Faculty



Autonomic Disorders

Paola Sandroni MD, PhD
Professor of Neurology, Mayo Clinic
College of Medicine and Science Chair,
Division Autonomic Disorders Mayo Clinic
Rochester, MN
Chair, Department of Neurology, Mayo
Clinic. Mankato, Minnesota



Neuropalliative Care

Cara Siegel, MD
Assistant Professor
Department of Medicine, Palliative Care Program
Department of Neurology
David Geffen School of Medicine at UCLA
University of California Los Angeles,
Los Angeles, CA



The Approach to Patients with New Onset Seizures

John Stern, MD
Professor & Director, Epilepsy Clinical Program
Department of Neurology
David Geffen School of Medicine at UCLA
University of California Los Angeles,
Los Angeles, CA



Workup and Management of Stroke

Jeffrey Saver, MD
Professor Vice Chair for Clinical Research
Carol and James Collins Chair,
Department of Neurology
David Geffen School of Medicine at UCLA
University of California Los Angeles,
Los Angeles, CA



Diagnostic and Prognostic Value of Neuroimaging

Daniel Silverman, MD, PhD
Professor, Department of Molecular and
Medical Pharmacology
David Geffen School of Medicine at UCLA
University of California Los Angeles, Los
Angeles, CA



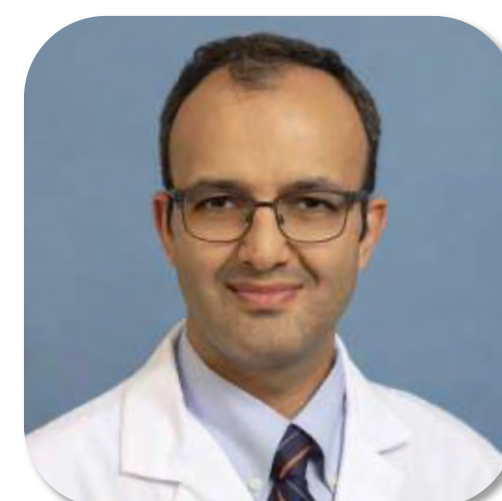
Communicating Risk of Dementia: When, How, Why and What

Neil Wenger, MD
Professor of Medicine
Director, UCLA Health Ethics Center
Department of Medicine
David Geffen School of Medicine at UCLA
University of California Los Angeles
Los Angeles, CA



Neuromuscular Disease Cases

Perry Shieh, M.D., Ph.D.
Associate Professor
Department of Neurology
David Geffen School of Medicine at UCLA
University of California Los Angeles,
Los Angeles, CA



Myopathies: From Diagnosis to Innovation

Payam Soltanzadeh, MD
Associate Professor
Department of Neurology
David Geffen School of Medicine at UCLA
University of California Los Angeles
Los Angeles, CA



Viral Infections and Autoimmune Encephalitis.

Michael Wilson, MD
Professor, Neurology
Weill Institute for Neurosciences
University of California, San Francisco
School of Medicine
San Francisco CA

Day 1 (Friday September 13th, 2024)

7:45 AM-8:00 AM (PST)



Introduction and welcome
Address

Alon Y. Avidan MD, MPH

7:45 AM-8:00 AM (PST)



Introduction and welcome
Address

Kevin Patel, MD

8:00 AM-9:00 AM (PST)



Review of Pediatric
Neurology

Meeryo Choe, MD

9:00 AM-9:45 AM (PST)



Practical Neurogenetic Cases

Brent Fogel, MD, PhD

9:45 AM-10:30 AM (PST)



Innovation in Neurogenetic
Therapies

Susan Perlman, MD

10:30 AM-11:15 AM (PST)



The Approach to Patients
with New Onset Seizures

John Stern, MD

11:15 AM-12:00 PM (PST)



Workup and Management of
Stroke

Jeffrey Saver, MD

1:00 PM-2:00 PM (PST)



Syndromic Approach to
Neuroinfectious Diseases

Tracey A. Cho, M.D.

2:00 PM-3:00 PM (PST)



Neuroimaging Cases

Noriko Salamon, MD, PhD

3:00 PM-4:00 PM (PST)



Viral Infections and
Autoimmune Encephalitis

Michael Wilson, MD

4:00 PM-4:45 PM (PST)



Neurosurgical Interventions
in Spinal Neurologic Disease

Langston Holly, MD

4:45 PM-5:30 PM (PST)



Neuro palliative Care

Cara Siegel, MD

REGISTRATION LINK: [https://medicalcme.org/registration /](https://medicalcme.org/registration/)

Day 2 (Saturday September 14th, 2024)

8:00 AM-9:00 AM (PST)



What Neurologists Need to Know About Sleep

Alon Y. Avidan MD, MPH

9:00 AM-10:00 AM (PST)



Spells, fits and non epileptic events; Video Demonstration and Innovations

Wesley T. Kerr, MD, PhD

10:00 AM-11:00 AM (PST)



Practical Approaches to the Dizzy Patient

Kevin Kerber, MD

11:00 AM-12:00 PM (PST)



Movement Disorders: Review and Practical Approaches

Adrienne Keener, MD

1:00 PM-1:45 PM (PST)



Neuromuscular Disease Cases

Perry Shieh, M.D, Ph.D

1:45 PM-2:30 PM (PST)



Myopathies: From Diagnosis to Innovation

Payam Soltanzadeh, MD

2:30 PM-3:15 PM (PST)



Dementia Cases

Bruce Miller, MD

3:15 PM-4:00 PM (PST)



Diagnostic and Prognostic Value of Neuroimaging

Daniel Silverman, MD, PhD

4:00 PM-4:45 PM (PST)



Innovations in the Treatments for Alzheimer's Disease

Fanny M. Elahi, MD, PhD

4:45 PM-5:30 PM (PST)



Communicating Risk of Dementia: when, how, why, what

Neil Wegner, MD

REGISTRATION LINK: <https://medicalcme.org/registration/>

Day 3 (Sunday September 15th, 2024)

8:00 AM-9:00 AM (PST)



Neurologic Critical Care:
Five Cases and Lessons

Navaz Karanjia, MD

9:00 AM-10:00 AM (PST)



Vasculitis of the Central
Nervous System

Tanaz Kermani, M.D., M.S.

10:00 AM-11:00 AM (PST)



Review of
Neuroophthalmology

Wayne T. Cornblath, MD

11:00 AM-12:00 PM (PST)



Management of Headache
Disorders

Joshua Kamins, MD

1:00 PM-2:00 PM (PST)



Autonomic Disorders

Paola Sandroni MD, PhD

2:00 PM-2:45 PM (PST)



Evaluation of the Patients
who present with a Brain
Mass

Robert Chong, MD

2:45 PM-3:30 PM (PST)



Neurosurgical Approached in
Neurooncology: What
Neurologists Need to Know

Kunal Patel, MD

3:30 PM-4:30 PM (PST)



2024: A new chapter in MS
Diagnosis and Treatment

Kevin Patel, MD

4:30 PM-5:15 PM (PST)



Promoting Brain Health in
People with MS

Barbara Giesser, MD

5:15 PM-5:30 PM (PST)



Conclusion and Adjournment

Alon Y. Avidan, MD, MPH

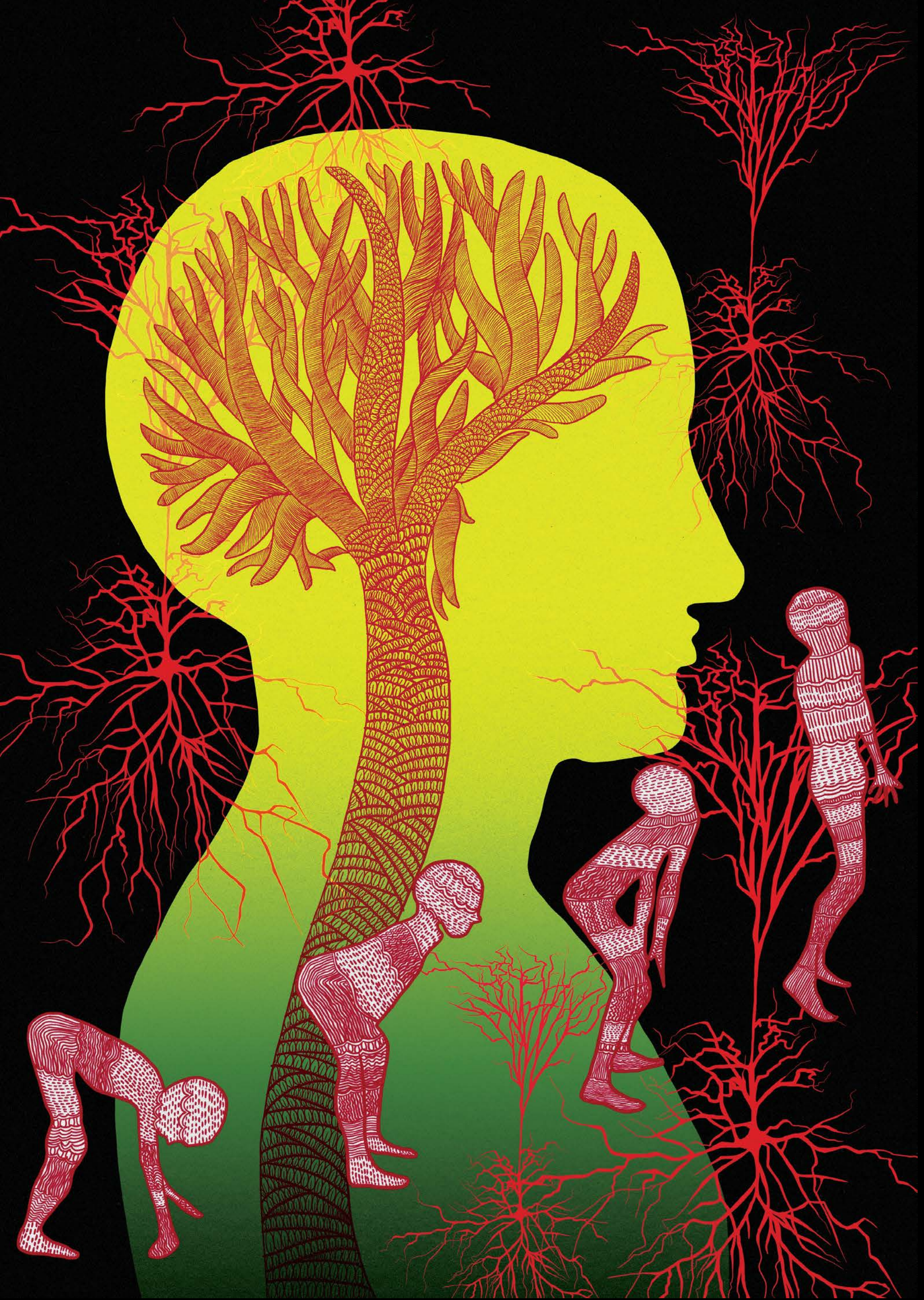
5:15 PM-5:30 PM (PST)



Conclusion and Adjournment

Kevin Patel, MD

REGISTRATION LINK: <https://medicalcme.org/registration/>



Course Enrollment

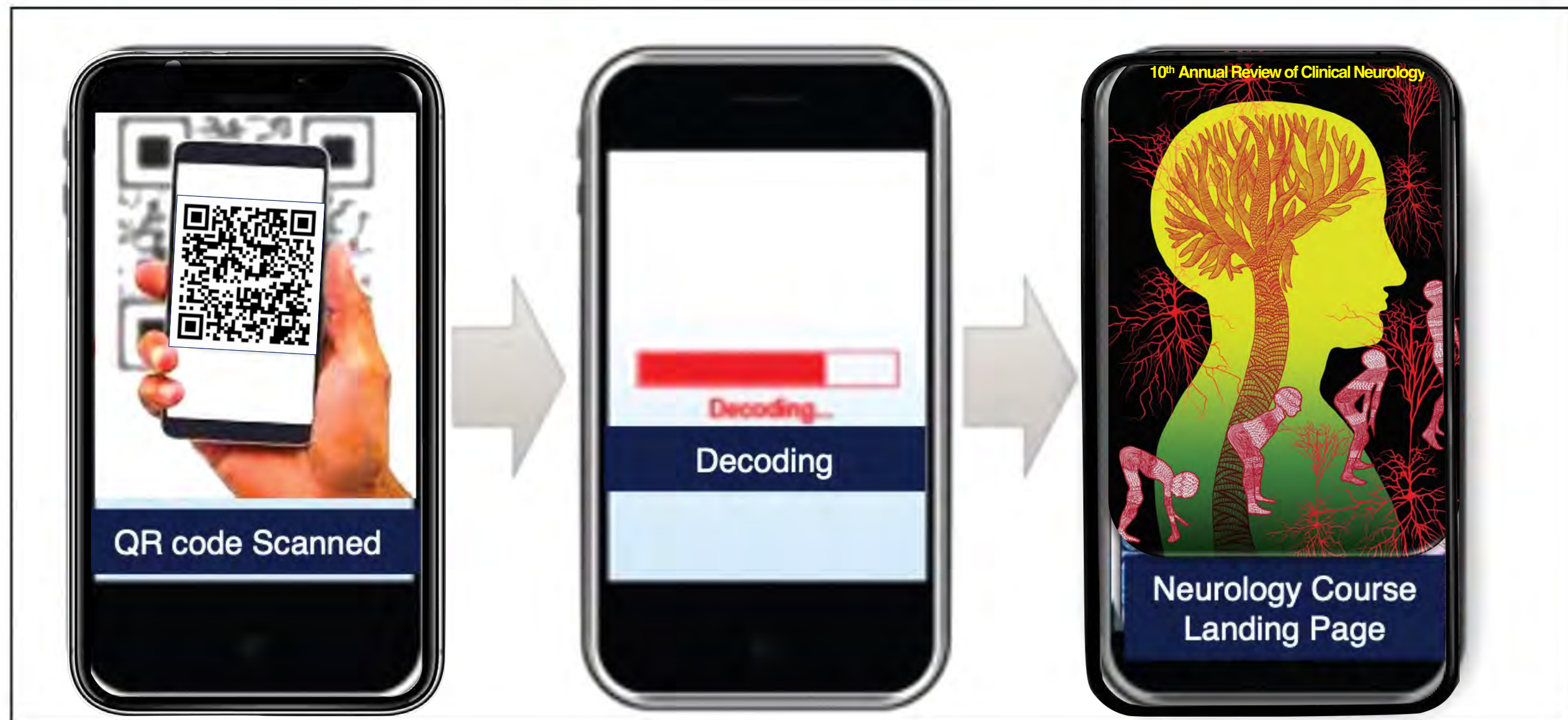
Enrollment Fee is \$300 and covers access to the live virtual webinar on 9/13-9/15/2025, slide syllabus and access to the recorded content⁵ for up to 30 days after the course.

To Register, Please visit: <https://medicalcme.org/registration/>

Alternatively, please scan the QR Code below in using your mobile device:



To review course content and register, please scan the code below into your mobile device



REGISTRATION LINK: <https://medicalcme.org/registration/>

GENERAL INFORMATION

Live Virtual Conference

The virtual conference will be live-streamed. Course registrants will be provided on-demand access to a recording of the conference for one month immediately following the conference.

Accreditation Statement

AKH Inc., Advancing Knowledge in Healthcare, is accredited by the Accreditation Council for Continuing Medical Education to provide continuing medical education for physicians.

AKH Inc will designate this live activity for a maximum of 24.00 AMA PRA Category 1 Credit(s)™.

ABPN MOC:

The American Board of Psychiatry and Neurology (ABPN) has reviewed the 10th Annual Review of Clinical Neurology and approved this activity as part of a comprehensive Self-Assessment activity, which the ABMS mandates as a necessary component of Continuing Certification.

Disclosure Statement

- The FDA has issued a concept paper that classifies commercial support of scientific and educational programs as promotional unless it can be affirmed that the program is “truly independent” and free of commercial influence. In addition to independence, the FDA requires that non-promotional, commercially supported education be objective, balanced, and scientifically rigorous. The policy further states that all potential conflicts of interest of the CME staff and faculty be fully disclosed to the program’s participants.
- In addition, the Accreditation Council for Continuing Medical Education policy mandates that the sponsor adequately manage all identified potential conflicts of interest prior to the program.



GENERAL INFORMATION

Contact US

Have A Question Or Need Assistance?

Send us an E-Mail:

office@clinicalcmegroup.com

Gives us a Call:

[\(424\) 559- 6102](tel:(424)559-6102)

REGISTRATION LINK:

[https://medicalcme.org/registration /](https://medicalcme.org/registration/)

